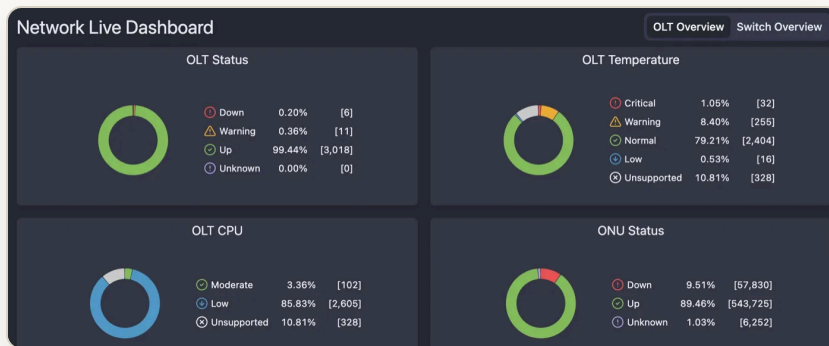


NETSENSE NETWORK MONITORING SYSTEM

Full-stack visibility for FTTH networks. From OLT to in-home WiFi.

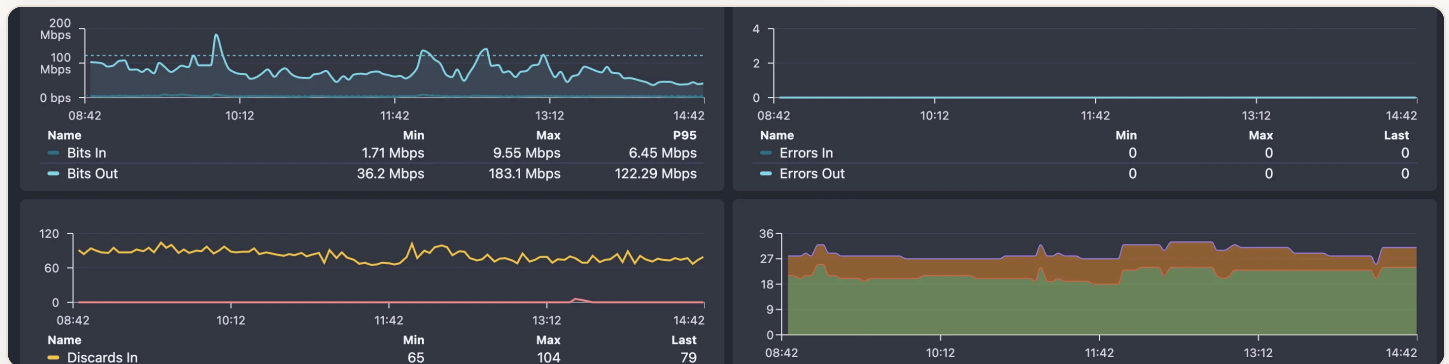
NetSense is a cloud-native NMS purpose-built for ISPs running fiber. Most monitoring tools stop at the OLT. NetSense doesn't. It stretches the same view all the way to the customer's WiFi, so the issues that drive most support tickets stop being invisible.

Detect partial PON failures, fiber cuts, and CPE drops before customers pick up the phone. Manage OLTs, switches, ONUs and TR-069 CPEs from one SaaS platform, with no servers to run, no upgrades to schedule, and no hardware to buy.



Key benefits

- Last-mile visibility**
 See OLTs, ONUs, switches, ports and in-home WiFi in one platform, not five disconnected tools.
- Cloud-native SaaS**
 No collectors to scale, no databases to babysit. We run the platform; you run the network.
- Proactive fault detection**
 Partial PON Down, fiber-cut signatures, port flapping and Rx power degradation caught before tickets land.
- Multi-vendor by default**
 Huawei, Nokia, V-SOL, Genexis, MikroTik, Syrotech, TechNXT, Richerlink. One inventory, one workflow.
- Built-in TR-069 / ACS**
 Provision, monitor and remediate CPEs and Wi-Fi telemetry without bolting on a second platform.



END-TO-END VISIBILITY

From OLT to the customer's WiFi.

Real-time monitoring of OLTs, switches, ONUs, ports and CPEs. CPU, temperature, voltage, Rx/Tx power and live traffic in a single view. No more blind spots after the splitter.



PROACTIVE DETECTION

Find faults before tickets land.

Partial PON Down detection, port flapping, fiber-cut signatures and continuous ping/latency catch issues that traditional NMS miss, so your NOC stops being reactive.



CLOUD-NATIVE SAAS

Scales with you, not against you.

One lightweight on-prem agent (2 cores, 4GB RAM). The rest runs in our cloud. Grow from a few thousand subscribers to millions without re-architecting your monitoring stack.

Use NetSense NMS to:

- ▶ **Replace fragmented tooling.** Consolidate OLT monitoring, switch and port telemetry, ONU health, TR-069 CPE management and alerting into one operator-grade platform.
- ▶ **Resolve issues before customers call.** Partial PON Down, fiber-cut signatures, port flapping detection and ONU offline-reason classification (power off vs. optical loss) shrink MTTR dramatically.
- ▶ **See the whole network in one map.** Dynamic and manual topology maps with live link capacity, traffic balloons, version diffs and Netbox sync. A real Weathermap replacement.
- ▶ **Manage CPEs and in-home WiFi remotely.** Built-in TR-069/ACS provisioning, firmware updates, WiFi telemetry and bulk ONU reboots. No separate ACS license.
- ▶ **Run a true multi-vendor estate.** Out-of-the-box support for Huawei, Nokia, V-SOL, Genexis, MikroTik, Syrotech, TechNXT, Richerlink, EdgeCore, ZyXel, Cisco, Juniper and more.
- ▶ **Automate noisy ops.** Configurable alerts via Email, Slack, Telegram and Webhooks; bulk operations on ports and ONUs; chart annotations for device/port down windows.
- ▶ **Scale without re-platforming.** One lightweight agent (2 cores, 4 GB RAM) on your side. The cloud handles the rest, from thousands of subscribers to millions.

PROOF, NOT PROMISES

Operating at scale on Excitel Broadband, one of India's largest FTTH ISPs, NetSense is engineered for real ISP workloads.

39 releases

Shipped in the last 12 months. New features, integrations & fixes

1.4M+

Subscribers monitored across deployed ISP networks

15+

OLT vendors plus 10+ switch/router brands monitored out of the box

20 yrs

In the trenches of ISP operations. Built by network engineers

BUILT BY OPERATORS, FOR OPERATORS

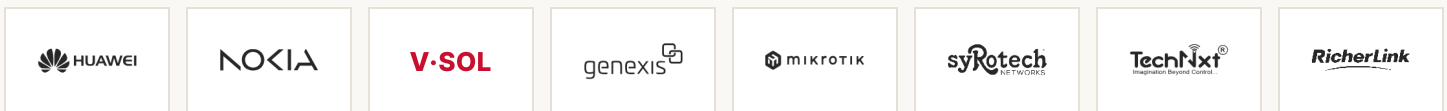
NetSense runs on Excitel's own production network every day, and on **Extreme IX**, India's largest internet exchange. Every feature ships from real NOC pain, not a roadmap deck.



NetSense gave us visibility we never had past the OLT. One tool, not five.

FTTH Operations Lead · Tier-1 Indian ISP, multi-million subscriber deployment

MULTI-VENDOR SUPPORT, OUT OF THE BOX



Plus EdgeCore (OcNOS), ZyXel, Cisco 9500/9600 & SG350, Juniper EX, UfiSpace, DBC and more. New integrations shipped monthly.



The Network Map gives us live visibility while we're moving traffic and pushing changes. We can see link utilisation shift in real time, catch ripples before they hit customers, and roll back fast if something looks off.

NOC Lead

Mid-sized Regional ISP · 35K+ subscribers



The TR-069 integration alone replaced a separate ACS platform. Provisioning, WiFi telemetry and bulk ONU operations live in the same place as our OLT health.

Network Engineering Manager

Regional Fiber ISP · APAC